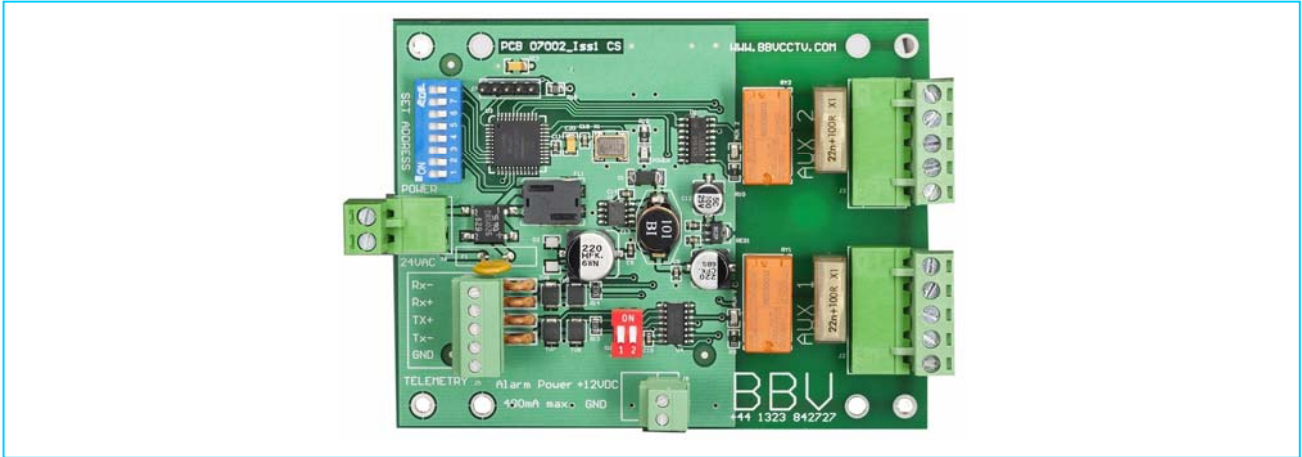




RX25X



Multiple Protocol Auxiliary Relay Receiver



Application Notes

The RX25X Multiple Protocol Auxiliary Relay Receiver is designed to offer a simple, cost effective solution to activate an auxiliary output, for example to activate a Washer, Wiper and Lights in a static camera application via a twisted pair cable.

The compact dimensions of the PCB allows fitting within the camera housing.

Features

- Multiple telemetry protocols available (dipswitch selectable)
- 2 or 4 wire
- Supports 128 addresses
- 2 x Volts free N/O contacts, controlled by Aux 1 & 2 and switched on command
- Power and communications LED

Technical specification

Power supply	12V – 24V ac/dc at 200mA max
Camera output	12V dc @ 400mA max
Temperature range	-10°C to +40°C
Dimensions	113m (l) x 87mm (w) x 22mm (h)
Weight	180g

Protocols supported by the RX25X:

- BBV RS485 @ 9600 N 8 1
- Pelco D @ 9600 N 8 1
- Pelco P @ 4800 N 8 1 (requires additional Starcard Converter)
- Pelco P @ 9600 N 8 1
- Sensormatic @ 4800 N 8 2



Building Block Video Ltd

17 Apex Park, Diplocks Way, Hailsham, East Sussex, BN27 3JU, UK
 Tel: +44 (0) 1323 842727 Support: +44 (0) 1323 444600
 Fax: +44 (0) 1323 842728 www.bbvcctv.com